

# MILTON

# MATTERS



Issue No. 80

MILTON NEIGHBOURHOOD FORUM March 2025



*Langstone Harbour/Milton Locks – Dave Timms*

## Milton Open Forum

Wednesday 19<sup>th</sup> March 7.00-9.00pm  
Christ Church, 239 Milton Road, PO4 8PH

Milton Common / Langstone Harbour / New  
Housing / Bransbury Park Leisure Ctr / AGM

Sat 14th June 2025

YOU'RE INVITED TO  
**PICNIC ON THE  
GREEN**

St James Hospital Green, off Locksway Road

Shout out for any local stall holders offering services or selling items. For more info please contact our lead organiser Paddy who will be pleased to advise on our competitive rates [pmcochara22@gmail.com](mailto:pmcochara22@gmail.com)



**Saturday 14th June 2025**

## Contents

Planning & Green Spaces – What Is New	5
Bransbury Leisure Centre Update	7
Gas Engine House	9
Our Last Open Forum	11
Forty - 4 - Frankie	15
Langstone Harbour Environmental Projects	16
AQUIND Latest	19
Milton Glee Choir	21

**Next Meeting: Wednesday, March 19<sup>th</sup> 7.00-9.00pm**

Join us at Christchurch Milton URC, 239 Milton Road on Wed 19<sup>th</sup> at 7pm

We will have a quick AGM to meet the legal formalities and approve our updated Constitution (see it at [miltonforum.org.uk](http://miltonforum.org.uk) to comment) as we move toward charitable status and then we have 3 very interesting speakers:

Bransbury Leisure Centre – An update on progress and plans from project manager David Moorman.

Milton Common – Donna Cook our local ranger will be back with news of developments on the Common.

Langstone Harbour – After the interesting talk last time on the harbour and how it operates, we are pleased to have Megan Roberts who manages the local environmental projects in the harbour.

Join us if you can, this is your forum and it only works if you get involved.

## Infrastructure and Celebrations

We have asked for CIL funding for 2 additional benches at St James Green and plan to dedicate one to Caroline Scott who led the efforts to ensure the Green became a community asset. And we have already approved funding for 2 more benches in Bransbury – what else would you like to see in Milton?

Next year is Portsmouth's Centenary as a City – what should we do in Milton?



# LAWSON ROSE

**PORTSMOUTH & SOUTHSEA'S AWARD  
WINNING ESTATE AGENT**

**SALES & LETTINGS**

**131 Winter Road, Southsea, P04 8DS**

**02392 367 779**

**[contactus@lawsonrose.com](mailto:contactus@lawsonrose.com)**

**[lettings@lawsonrose.com](mailto:lettings@lawsonrose.com)**

**[www.LawsonRose.com](http://www.LawsonRose.com)**

## **Recent Planning Decisions and Green Spaces**

Bransbury Leisure Centre was approved in December and in February a Conditional Grant of Planning Permission, was awarded to Vistry Southern for 58 homes including 18 “Affordable Units” on the site of the old Harbour School at St James. It’s intended that 100% of the new homes will eventually be secured as “Affordable” through a Homes England Grant, like Kingston Prison. At the same Committee, PJ Livesey were granted rights of access for construction vehicles to St James’s along Moorings Way, Warren Avenue and Edenbridge Road.

Against the first two proposals, the Milton Neighbourhood Forum explained to the Planning Committee where the schemes conflicted with the Milton Neighbourhood Plan. With the third, we demonstrated the inadequacies of the local highway network.

The December decision by the Council’s Planning Authority approved the City Council design. Whilst not opposing the principle of the new Leisure Centre, the Forum argued the loss of green space for the expansion of car parking wasn’t justifiable or acceptable. Nor was re-siting the children’s playpark nearer a public highway.

The Forum opposed the Vistry application because of unnecessary tree and habitat damage leading to on-site biodiversity losses. An earlier scheme by the same landowner, Homes England, was designed around the existing landscape features but provided three fewer new homes. Homes England and Vistry had engaged with the Council’s Urban Design Team to conceive what’s superficially an attractive scheme. We pointed out that since the initial scheme PCC, had created a Cabinet for Climate Change and Greening, Declared Climate and Nature Emergencies but somehow Officers were recommending a new scheme ripping out more trees. We were pleased with the Committee’s insistence on the Milton Plan’s parking standards of 82 rather than Vistry’s compromise with Officers of 87 spaces.

The application to use Moorings Way as an access route to the Hospital was restricted to two vehicles/day avoiding school opening and closing times.

The changes we had wanted towards retaining and enhancing green spaces in Milton is much harder than we’d thought. “Business As Usual” isn’t the right response but it was encouraging to see that the Committee were receptive to our arguments.

Rod Bailey



# ANGUS TREE SERVICES LTD

## OUR RANGE OF COMMERCIAL TREE SERVICES INCLUDE:

Tree felling	Hedge trimming
Tree thinning	Hedge reduction
Limb removal	Deadwood removal
Site clearance	Regular tree/site maintenance
Stump removal	Hazardous tree/limb removal
Crown thinning	Emergency call-out service
Crown reduction	

We offer a friendly and professional service covering all aspects of tree care. All work BS3998 2010 Standard, full trade waste license, fully insured for £10 million, all staff are DBS checked.

**07775 764 669**

**@angustreeservices**

**www.angustreeservices.co.uk**

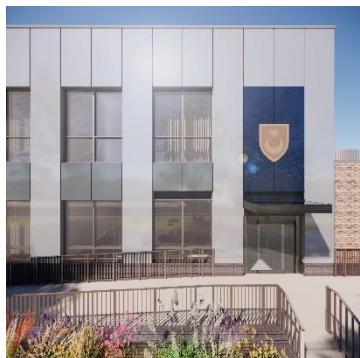
**bob@angustreeservices.co.uk**

**CALL FOR A FREE QUOTE**

## Bransbury Park project gets the go-ahead

Planning permission was granted in December 2024 for Portsmouth City Council's plans for Bransbury Park. The plans include a new leisure centre with a swimming pool, learner pool and gym, built on the old hard courts. This will include a new GP surgery for the Lighthouse Practice, who will move from Devonshire Avenue. There will be a relocated play area with new equipment, and the miniature railway will be kept in the same position.

In addition, the old changing pavilion will be replaced with a modern facility, with a new astro-turf pitch and multi-use games area to the north of the new building.



At the time of going to print, Portsmouth City Council are working with the contractors, Willmott Dixon, on the final detailed designs for construction. The project will begin with the construction of the new playground in the south-west of the park this summer, followed by the main building works starting later in the year. Completion is expected in early 2027.

Local residents are encouraged to sign up for the Bransbury Park e-bulletin at [www.portsmouth.gov.uk/bransburypark](http://www.portsmouth.gov.uk/bransburypark) to get the latest information.

The Council will consult with people on the future use of the Eastney Swimming Pool site before any demolition occurs. However, the building is unsafe, at the end of its life, so it will be demolished without unnecessary delay. The consultation will take place in the coming months, and the Council will update the Milton Neighbourhood Forum when dates are confirmed.



## YOUR LOCAL FAMILY LAW SOLICITOR



### RUTHERFORD SOLICITORS



SPECIALIST QUALITY MARK HOLDER

257 MILTON ROAD  
PORTSMOUTH PO4 8PQ  
Tel: 02392 735 700

[www.rutherfordsolicitors.co.uk](http://www.rutherfordsolicitors.co.uk)  
[nikki@rutherfordsolicitors.co.uk](mailto:nikki@rutherfordsolicitors.co.uk)

### VERY COMPETITIVE FIXED FEE OPTIONS

UP TO 1 ½ HOURS MEETING £125 + VAT

### LEGAL AID AVAILABLE

WE OFFER **LEGAL AID** ADVICE IN FAMILY LAW INCLUDING CHILDREN, CARE PROCEEDINGS, PROTECTION FROM DOMESTIC ABUSE, DIVORCE, AND FINANCIAL MATTERS. IF YOU ARE ELIGIBLE FOR LEGAL AID, YOU MAY QUALIFY FOR **FREE LEGAL ADVICE.**

### WILL DRAFTING AND LASTING POWER OF ATTORNEYS

**(T&C's APPLY):**

Our cost for a Straightforward Individual Will: **£250 + VAT**

Our cost for a Straightforward Joint/Mirror Will: **£350 + VAT**

Our cost for a Straightforward Lasting Power of Attorney for Financial Decisions/Health Decisions: **£295 + VAT (Excluding Registration)**

Our cost for a Lasting Power of Attorney for both Financial Decisions and Health & Care Decisions: **£395 + VAT (Excluding Registration)**

Please telephone us or call in to the office for further details.



## Eastney Pumping Station – Gas Engine House Update

Progress has been made towards bringing the engines in Eastney Gas Engine House back into regular use.

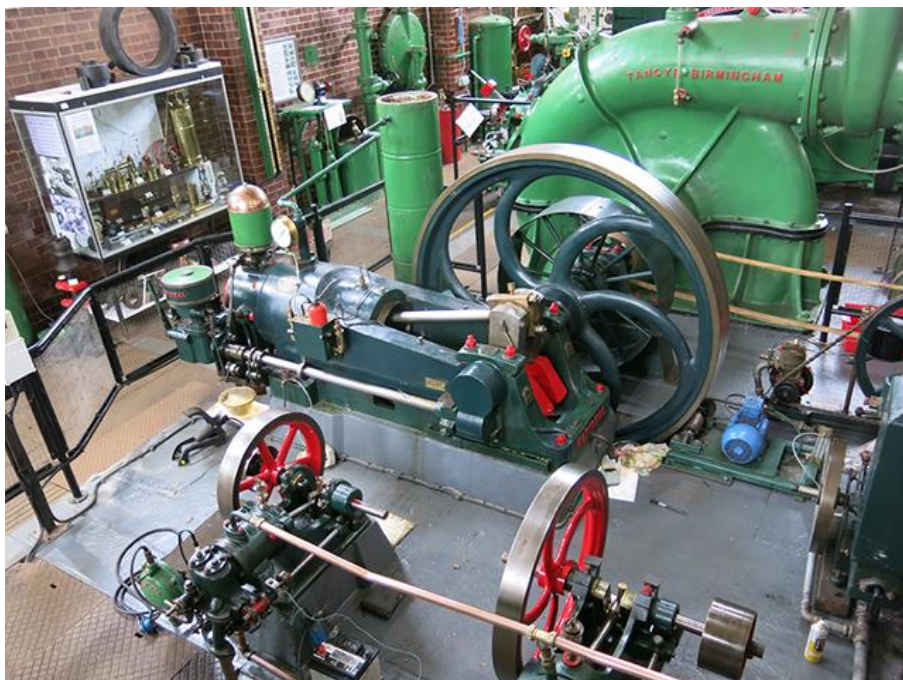
Unfortunately, the machinery has not been in regular use for nearly a year, although the site, which is part of Portsmouth City Council's museums service, has remained open to visitors.

A review of procedures at the site showed additional safety measures were required. This led to the engines not being allowed to operate outside of turning them over for conservation purposes.

Staff changes within the council meant the health and safety review has taken longer than anticipated but three members of museums staff and six volunteers have now received additional training and risk assessments should be completed this month.

We're expecting the council to start recruiting for new volunteers at the site during April, anyone interested should email [mvs@portsmouthcc.gov.uk](mailto:mvs@portsmouthcc.gov.uk)

The site is open to the public on the last Sunday of each month and we look forward to the engines once again operating as part of this.



# WHY BUY WHEN YOU CAN BORROW?

Tackle your diy  
to-do list without  
breaking the bank

Drills to drain rods, sanders to saws...and more.



Affordable tools  
and supplies for  
busy families

Bubble machines to badge makers,  
party kits to pressure washers....

 PORTSMOUTH  
LIBRARY  
& THINGS

07579 02 6568

hello@shareportsmouth.org.uk

 @shareportsmouth 



[www.shareportsmouth.org.uk/borrow](http://www.shareportsmouth.org.uk/borrow)

## **Notes From Our Last Forum Meeting**

### **Planning**

Lucy Howard, Head of Planning Policy at Portsmouth City Council, discussed the emerging City Plan. The plan has recently been consulted on to ensure it is legally compliant and 'sound'. Once this process is complete, it will be sent to the Inspectorate. The current timetable allows the plan to meet existing housing targets rather than potential future targets. Additionally, there is a request to the Secretary of State to set aside ecological protections at Tipner West as Portsmouth City Council considers there to be an overriding public interest to develop the site. The new plan will guide city planning until 2042.

The recently adopted Local Neighbourhood Plan, created by the Forum, is now incorporated into the City Plan, making the Milton Neighbourhood Forum a statutory consultee. The Forum's Neighbourhood Plan is unique in the city and provides more detailed guidance for the area, such as designating Local Green Spaces. Lucy highlighted the importance of maintaining good working relations with the Forum to benefit both Milton and the rest of the city. A statement of Common Ground has recently been agreed upon regarding changes to the coastal zone's extents and the 'land swap' proposed for Langstone campus. In the future, the Plan will refer to St. James Green instead of the 'dog park.'

Questions from the audience expressed concerns about building more houses in an already crowded city. Lucy explained that these targets are determined by national policies rather than local authorities.

### **Sea Defences**

We were pleased to welcome Amy Conway from Coastal Partners back to the Forum to discuss the North Portsea Coastal Scheme. Funding has been secured from the Environment Agency, and Knights Brown, who successfully constructed the first and third phases, will build 1.3 km of flood defences. These defences will consist of a sloped earth embankment with a rock armour toe towards the creek, connecting the completed defences at Anchorage Park in the east with Tipner Lake in the west. Initial clearing and excavation works have commenced in this area, renowned for its green open spaces.

The project is being conducted in collaboration with an on-site archaeologist, given that the area is adjacent to the Hilsea Lines built in the 18th and 19th they are key part of Portsmouth's historic defences. Designated as a Scheduled Ancient Monument they are the best-preserved example of a bastioned and casemated defensive line in England,

The shoreline is recognised for its unique habitat and carries several important environmental designations. To support and safeguard local wildlife, a variety of nest boxes suitable for breeding birds were installed in advance. Additionally, new bat boxes will be placed in woodland areas to enhance roosting potential, and tunnels will be created for kingfishers to provide additional nesting sites.

The project's emphasis is on revitalising the area known for its green open spaces while preserving its natural feel by planting trees, native shrubs, and wildflowers, and enhancing paths and coastal access. The area will also benefit from new picnic benches, seating, play areas, and viewing platforms.

During the construction phase, Foxes Forest will remain accessible.

Our second speaker on the coastal defences project was Rena Wiethaupt, Senior Communications Officer at PCC, who discussed the upcoming work on the landward part of Frontage 3 (Southsea Common), from Blue Reef Aquarium to the Hovertravel terminal. The work will require closing Clarence Parade and the promenade until completion in summer 2026. A temporary footpath is being constructed across the Common to provide pedestrian access during construction.

The main sea defence will consist of a combination of stepped and rock revetment, with a managed beach. A raised embankment with a dip slope into Southsea Common will serve as the secondary defence line. The promenade and road will be elevated to maintain sea views and provide level access to the Naval War Memorial. The required height of the defences will be segmented into stepped levels, featuring coastal planted terraces, play areas, and seating.

In addition to essential protection, the sea defences aim to enhance the seafront experience. There will be a one-way road system (westbound) with a single carriageway and a reduced speed limit of 20mph. A 3m wide two-way cycle lane running alongside the promenade will be separated from car parking by a 2m buffer strip. An 8m wide promenade will offer space for events, socializing, and relaxation.

The Grade II listed memorials will be placed centrally along the promenade to create a 'memorial walk.' Coastal planted terraces, play areas, new lighting, and seating will also be included.

It was uncharitably noted that recent storms had caused the new path to become a waterlogged ditch.

## Langstone Harbour

Our final speaker was Billy Johnson, the Harbour Master for Langstone Harbour, who gave us a taste of the work he and his team carry out. The harbour covers 4,695 acres at high tide and 495 acres at low tide. It is designated as a Competent Harbour Authority with statutory pilotage duties and acts as a planning consultee for developments within its boundaries.

The marine aggregates industry supplies 17% of the UK's sand and gravel needs, and the harbour brings in 500,000 tonnes of aggregate yearly. Each vessel requires piloting through the harbour's shallow waters to Kendall's and Bedhampton wharfs. All sailings are made on the falling tide.

There are various other users of the harbour, including around 1,000 sailing vessels, 470 moorings, board sport enthusiasts, and restricted Jet ski access. The Hayling Ferry transports 45,000 passengers annually. The harbour also hosts a small fleet of commercial fishing vessels.

As a Category 2 response organization, the harbour assists emergency services, manages oil spill responses, and maintains channels marked by buoys. Other operations include maintaining 90 moorings, 43 navigation aids, handling emergencies, search and rescue (SAR), pollution response, and enforcing safety through byelaws and patrols.

The Harbour Board is dedicated to protecting and enhancing the internationally significant habitats and species within its jurisdiction. The environmental designations of Langstone Harbour impose critical obligations on the Harbour Authority to manage the harbour environment in compliance with the Habitats Regulations and the Birds Directive. This includes regulating harbour activities to minimize disturbance and conducting monitoring to ensure compliance.

Langstone Harbour offers diverse habitats, including intertidal mudflats, seagrass meadows, and Atlantic saltmarsh. These habitats provide feeding grounds and shelter for wildfowl and wading birds, optimal conditions for a bass nursery, and a haul-out site for a colony of harbour seals.

Billy concluded by discussing some of the projects the board is involved in with Meg Roberts, the environmental officer. These projects include the Solent Seagrass Restoration Project, focusing on maintaining healthy seagrass beds crucial for productive fish stocks in the region, and a Native Oyster Restoration project.

Thank you to all our wonderful speakers for giving up their time to speak to us.

STATE OF THE ART NEW ON-SITE MOT BAY - BEGINNING OF AN EXCITING  
NEW CHAPTER FOR MOTOTECH

SPECIALIST IN PERFORMANCE & LUXURY VEHICLES - CATERING TO ALL  
YOUR MECHANICAL NEEDS!

CALL OR ENQUIRE

EMAIL: [MOTOTECH@LIVE.CO.UK](mailto:MOTOTECH@LIVE.CO.UK)



M.O.T ONLY

£50.00

Unit 8 Warren Avenue Industrial Estate  
Warren Avenue, Milton  
Portsmouth PO4 8PY

Telephone: 023 9287 4784



*Willows  
Wheels*

PRIVATE HIRE - PRE-BOOKINGS ONLY

**07746 395443**

[willowswheels@gmail.com](mailto:willowswheels@gmail.com)

Independent Private Hire Company / Friendly family run business

Do you need transport to the Airport, Docks or Long Distance?

Please call or email for a quote

## Forty-4-Frankie Update

As you will recall, Forty-4-Frankie (F4F) is a campaign aiming to raise funds for forty more 24-hour defibrillators in Portsmouth and increase awareness and confidence in using this emergency equipment.

Since our last Milton Matters in October, we have installed 6 more 24-hour defibrillators. There are now 11 more defibrillators in Portsmouth, over a ¼ of the way to our target! The recently installed sites in Milton-Baffins area are at: -

**Aqua Cars, 12-13 Rodney Road** General Manager Bruce Hall is pictured here. With special thanks going to Ian McNiven who co-ordinated the part- fundraising and installation.



**St Cuthbert's Church, Litchfield Road**

Pictured are members of the Church Trust who helped make this happen. The church raised all the money with F4F delighted to aid discussion, manage the purchase and assist with their registration.



**The Jolly Taxpayer, 2 Eastbourne Road**

Many thanks to Theresa Johns (TJ), pictured and her family and customers for their contributions towards the equipment and installation and also to James Saunders, our local electrician.



**Inn lodge Hotel, Burrfields Road**

Funds for this equipment were raised through F4F donations and fundraising activities with the General Manager, Emma Cupit using their in-house electrician for the installation.



**For full details on all available defibrillator units visit Find A Defib**  
**<https://www.defibfinder.uk/> However, in a cardiac emergency ring 999**

We have attended many other events and activities already this year – for full details see the long version of this article on the website: [miltonforum.org.uk](http://miltonforum.org.uk)

**We are still accepting funds via our Crowdfunding page**  
**<https://www.crowdfunder.co.uk/p/forty-4-frankie>**

Thank you ALL for your ongoing support and generosity, let us keep this going! Lynn Timms [timmslynn@yahoo.co.uk](mailto:timmslynn@yahoo.co.uk)  
[www.forty-4-frankie.co.uk](http://www.forty-4-frankie.co.uk)



## Langstone Harbour – Environmental Management

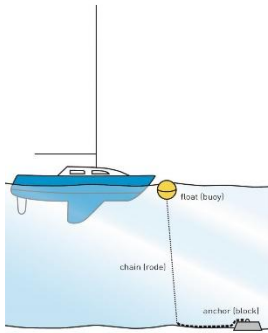


One of the most protected areas on the South coast, Langstone Harbour is internationally recognised for its significant habitats and species. As a vital ecological and recreationally asset for the City of Portsmouth, the harbour is home to a diverse range of habitats including mudflats, seagrass meadows, and Atlantic saltmarsh. Habitats like these across the Solent support an astonishing variety of wildlife, 10% of the global population of Dark-Bellied Brent Geese, and one of the only breeding populations of Harbour Seals on the South Coast! However, Langstone Harbour faces several significant threats. Climate change, with rising sea levels and increased unpredictability and severity of severe weather events, poses a serious risk to many vital habitats, and thus the species that depend on them. Nutrient loading from agricultural runoff and wastewater discharges can lead to excessive growth of algal mats, smothering mudflats and saltmarsh and preventing bird species from feeding effectively. Pollution from urban runoff and highways can also introduce harmful contaminants into the harbour, affecting water quality and marine life.

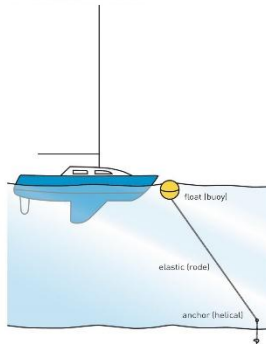
In response to some of these challenges, the Harbour Board is engaged in several key environmental projects aimed at preserving and enhancing this unique environment. One of our primary objectives is the establishment of a small-scale seaweed bioremediation site within the Harbour. This project aims to cultivate seaweed, which helps to improve water quality by absorbing those excess nutrients in the water column, converting it into physical growth of the seaweed. Seaweed aquaculture has also been recognised as providing a forage and refuge habitat for marine life.



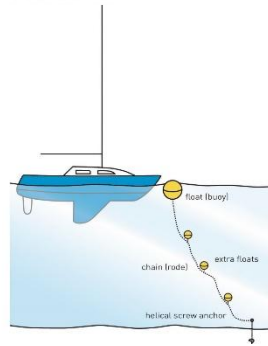
A: Traditional mooring



B: AMS – With elastic rode and helical screw or concrete block anchor



C: AMS – Chain with floats and helical screw or concrete anchor



Another significant project involves replacing a proportion of traditional intertidal swing moorings, which have a damaging effect on the seabed with advanced mooring systems. Simply, these AMS use a screw anchor and elastic rode, instead of a concrete block and heavy chain, to reduce pressure on intertidal habitat and encourage seabed recovery. This innovative approach helps protect vital habitats and promotes the health of the Harbour. Examples across the South Coast include the Voluntary No Anchor Zones at Osborne Bay and Studland Bay.

In addition to these projects, we are collaborating with local councils and citizen science groups to improve water quality in the harbour. Regular monitoring of harbour wildlife e.g. bird, fish, and seal populations also helps us to understand the health of the Harbour's ecosystem and informs our conservation strategies. We are actively working with partners locally to enhance seagrass meadows and saltmarsh areas, which are crucial for biodiversity and carbon capture. Public engagement is another aspect of our work, and we are committed to



raising awareness about the importance of Langstone Harbour through educational programs which aim to engage the community and promote local conservation efforts. By working together with local communities and stakeholders, we can ensure this unique environment remains a haven for wildlife and a cherished space for recreation.

Meg Roberts  
Environment Officer, Langstone Harbour Board  
[admin@langstoneharbour.org.uk](mailto:admin@langstoneharbour.org.uk)

# GUIDE TO LOCAL SERVICES IN MILTON

## DIPEST PEST CONTROL LIMITED

All types of pest eliminated – No more than £50  
Mr Simon Houghton MD, MRIPH, IMIFM, MBPR (Pest Control)  
Field Biologist  
Hope House, 19 Revenge Close, Southsea, PO4 8YE  
PHONE (023)9235 8692 MOBILE 07748 791 248  
dipestpestcontrol@ntlworld.com



**BJM UPHOLSTERY LTD 107 Guildford Rd, Fratton**

**Tel: 02392 822642**

**Foam cut to size, cushions filled, re-upholstery**

THE BROW ARTIST  
SOUTHSEA

BROWS/BEAUTY AND  
SKIN



Home based brow and beauty business in Milton. Services include microblading, henna brows, HD brows, facial waxing, brow/lash tinting, lash lift and tint, dermaplaning, spa facials and Indian head massage.

Offering 10% off your first appointment when quoting this advert. Pages on both Facebook and Instagram @thebrowartistsouthsea or call to book an appointment with Vicky on 07715 986948

## WANT TO ADVERTISE IN MILTON MATTERS?

**ADVERTISING RATES Full page £100/ ½ £60/ ¼ £35  
(+20% for non-Milton based)**

**Contact: Martin 07990 181099.**

**[miltonneighbourhoodforum@gmail.com](mailto:miltonneighbourhoodforum@gmail.com)**

**ADVERTISING COPY IN WORD OR JPEG ONLY PLEASE**

## **Aquind Interconnector – Decision still pending**

Speaking to people locally, most are convinced that the Aquind Interconnector project is over. No trenches across the common, no Eastern Rd traffic chaos  
**Sadly, THIS IS NOT THE CASE. THE FIGHT CONTINUES.**

Aquind continue in their attempts to bully us into submission.

On the 20<sup>th</sup> January, after a 3 month delay, a document titled "Applicants response to MOD submission" was published on the Planning Inspectorate (PINs) website. To see it, search for the original date (14<sup>th</sup> Oct).

In August the MOD stated the Aquind interconnector constituted a threat to National security. Aquind is now challenging this position.

MODs statements: "The reasons why the Proposed Development is a cause of significant concern for the MOD and why MOD considers development consent should be refused necessarily involve information regarding UK defence and national security which it would be contrary to the national interest to disclose."

"Development consent for the Proposed Development should therefore be refused."

How can Aquind, with its history, dare to question the MOD in a matter concerning our National Security? This specific matter is currently under discussion and there is no time limit.

To remind you where we stand: Local councillors and MPs remain committed in their opposition to the Aquind interconnector and have renewed their engagement with the DESNZ. Indeed, the opposition has grown. Recently, Havant Borough Council added their objections to the project.

Recently, additional issues have arisen: local construction works at the Ladybridge roundabout in Widley/Purbrook will take substantially longer than originally anticipated. There are two major infrastructure projects proposed: Rampion 2 Offshore Windfarm and the Southern water effluent recycling scheme, these will have additional impact.

In the UK Ofgem and in France CRE (the French equivalent to Ofgem) rejected Aquind for their 3<sup>rd</sup> cap and floor regime. Ofgem's reasons are revealing:

"5.33 ... we have decided to reject AQUIND's application for a cap and floor regime as we are concerned with the potential negative effect this project has on the system. NESO's analysis suggests that the introduction of AQUIND into the system would generate significant constraint costs. We consider the

# GUIDE TO LOCAL SERVICES IN MILTON



- Boiler Service and Repairs
- Boiler Installation
- Full heating installations
- Landlord Gas Safety Certificates
- General Plumbing and Gas Work



[www.pingzone.co.uk](http://www.pingzone.co.uk)



PC and Laptop repairs



Is your machine running slow?



Upgrades



Mobile phone and tablet screen repairs



Networking



Virus and Malware protection

Please contact Dave if you need any help.



02392 215 999



07944 917 293



[support@pingzone.co.uk](mailto:support@pingzone.co.uk)



14 Tern Walk, Milton, PO4 8QG - by appointment please

modelled increase in constraint costs generated by AQUIND is disproportionate and represents a risk to consumers if it were to materialise.”

Why do it if it is mainly for the export of energy and a risk for the consumer?

In the UK, Aquind is marketed as being beneficial to the UK customer, bringing in a huge amount of energy. Similarly in France, Aquind states to the French public that it would be a valuable energy provider. How does that match up with popular opposition on both sides of the English Channel?

As we write, in France Aquind remains locked in dispute with residents, local mayors and regional politicians who remain united against the project.

Where do we go from here and what can you do to help? So far, we have brought the Aquind project to a stop. We have shown that together, collectively, our voices are listened to. We need to raise our voices again.

How to do this: Write to [aquind@planninginspectorate.gov.uk](mailto:aquind@planninginspectorate.gov.uk) and send a copy to your MP. Express your concerns clearly. If you need help, contact us or look at [www.stopaquind.com](http://www.stopaquind.com) or our Fb group Let's Stop Aquind.

We must be vigilant – it is not over yet.

Viola Langley for Let's Stop Aquind

## Milton Glee Choir Looking For Members

We are a friendly choir and rehearsals are great fun too. We sing a variety of music to suit everyone's tastes and have recently performed a Christmas Concert at Portsmouth Guildhall with the Royal Marines Association Band.



We would love to have new members join us, from all voice parts, particularly Tenor and Bass. We already have some concerts and social events planned and would love to meet anyone who would like to join us.

The Choir meet every Friday at Saint James Church Hall Milton at 7:30. There is no audition. Just come along to a rehearsal and see what you think.

Clare Brown, Milton Glee Choir

# Milton Village Community Association

Milton Village Hall, 182 Milton Road, Southsea, Hants, PO4 8PR

Tel. 023 9287 3788 Email: [miltonvillagehall@gmail.com](mailto:miltonvillagehall@gmail.com)

Office: 9.30am-12.30pm Mon-Fri Website: [www.miltonvillagehall.co.uk](http://www.miltonvillagehall.co.uk)

## PARTIES & FUNCTIONS AT MILTON VILLAGE HALL



Day time hire rates include 2 hours for your party plus 1 hour for set up & ½ hour for pack up  
Evening rates are effective from 6pm onwards (whole or part evening)

<b>Main Hall:</b>	<b>Small Hall:</b>	<b>Both Halls:</b>	<b>* Members: Up to £10 off!!</b>
£70 (Day)	£50 (Day)	£100 (Day)	<i>* Ask about catering from our</i>
£100 (Eve)	£70 (Eve)	£150 (Eve)	<i>onsite Coffee Shop, Pure Ground</i>

## TRIPS & HOLIDAYS

Make sure you've registered for our new Summer Programme of trips & events, due out early March! Members will automatically be sent the new programme by email or post.

## CURRENT REGULAR ACTIVITIES at Milton Village Hall (Bold = New)

Monday	Tuesday	Wednesday	Thursday	Friday	Sat	Sun
Music Mad	Pilates	Bingo n Brunch (m)	Weight Watchers	Yoga	Theatre School	AA
Curling	Adult Ballet	50+ Keep Fit	Home Ed Art Group	Cribbage (All levels)	Private Hire	Private Hire
Seated Keep Fit	Cribbage (Experienced)	Weight Watchers	Beginners Singing (m)		Comedy Club	12 Step Programme
Dog/Puppy Training	Beetle Drive (m)	Sister in Song (m)	Bereavement Group (m)	Line Dancing		
Boxercise	Yoga	Dog/Puppy Training	Folk Band (m)	Yoga		
	Tap Dancing		Pilates			
			Family Self Defence			

For more info or contact details for any group or class, please contact the office on 02392 873788 / [miltonvillagehall@gmail.com](mailto:miltonvillagehall@gmail.com)

## FACEBOOK

Unfortunately, our Facebook page was hacked and we permanently lost it, along with nearly 2000 followers!! Please help us to rebuild our new page by giving it a like or following it! **We are now under 'MILTON VILLAGE HALL' with a picture of the front of the building as our profile picture!** Thank you!



Like us on Facebook at MILTON VILLAGE HALL  
for latest news & info!  
Registered Charity 1003706



## Milton Village & Eastney Area Community Associations Update

We're pleased to report that this past year has been very successful for both centres and we're now looking to officially merge, with one Association/registered charity running both sites.

Each site has its own identity and different attributes, and we want to keep that, but we will merge assets and simplify both set up & admin. With Eastney's large hall, big parties/functions and social events are very popular, and the mirrored studio attracts lots of dance and fitness classes. Milton's social offerings include fun groups for seniors and, of course, trips & holidays, as well as halls for hire and classes.

One challenge will be how to merge membership, with both centres charging different membership fees and offering different benefits!

In the meantime, Milton will be producing its Summer Newsletter with the new Trips & Holiday programme by early March and at the same time a new Events Programme for Eastney will also go out, so keep a look out ..... Elvis may again be in the building - uhah!

For more information about each centre, please phone or email our lovely office staff, Jennie at Milton and Debbie at Eastney:



Milton Village Hall, Milton Road, PO4 8PR  
Phone: 02392 873788 (Jennie)  
Email: [miltonvillagehall@gmail.com](mailto:miltonvillagehall@gmail.com)  
Office Hours: Mon-Fri 0930-1230



Eastney Community Centre, Bransbury Road, PO4 9SU  
Phone: 02392 864306 (Debbie)  
Email: [eastneycc@gmail.com](mailto:eastneycc@gmail.com)  
Office Hours: Mon-Fri 0930-1230

## MILTON NEIGHBOURHOOD FORUM COMMITTEE

Martin Silman – Chair  
Dave Willcox – Vice Chair  
Martin Lock – Treasurer  
Rod Bailey – Neighbourhood  
Plan Chair  
Patrick O'Hara – Secretary  
Dan Brooks  
Ian Clark  
Peter Crockett

Paul Hinchliffe  
Viola Langley  
Lyn Mills  
Peter Mills  
  
Reg Puntis  
Paula Savage

You? ....

### **Ward Councillors – Milton**

#### **Cllr Gerald Vernon-Jackson**

39 Lindley Ave.,  
Southsea  
(07976 949272)  
[geraldvj@gmail.com](mailto:geraldvj@gmail.com)

#### **Cllr Kimberly Barratt**

C/o Members' Services Floor 3  
Civic Offices, Guildhall Sq.,  
PO1 2AL (07447904224)  
[cllr.kimberly.barrett@portsmouthcc.gov.uk](mailto:cllr.kimberly.barrett@portsmouthcc.gov.uk)

#### **Cllr. Steve Pitt**

C/o Members' Services as above  
(023 9283 4936/ 07966 763635)  
[Cllr.Steve.Pitt@portsmouthcc.gov.uk](mailto:Cllr.Steve.Pitt@portsmouthcc.gov.uk)

### **Ward Councillors - Baffins**

#### **Cllr Leonie Oliver**

C/o Members' Services Floor 3,  
Civic Offices, Guildhall Sq.,  
PO1 2AL (07823 804896)  
[cllr.leonie.oliver@portsmouthcc.gov.uk](mailto:cllr.leonie.oliver@portsmouthcc.gov.uk)

#### **Cllr. Darren Sanders**

Flat 6, 92 Victoria Road North  
Southsea, PO5 1QE  
(07740 680612)  
[darrensanders59@gmail.com](mailto:darrensanders59@gmail.com)

#### **Cllr. Abdul Kadir**

c/o Members Services as above  
(07826 534614)  
[Cllr.Abdul.Kadir@portsmouthcc.gov.uk](mailto:Cllr.Abdul.Kadir@portsmouthcc.gov.uk)

**Neighbourhood Forum website** <http://miltonforum.org.uk>

**Contact Us:** [miltonneighbourhoodforum@gmail.com](mailto:miltonneighbourhoodforum@gmail.com)

Supported by



**Portsmouth**  
CITY COUNCIL

The Neighbourhood Forum is responsible for editorial content, design and distribution of Milton Matters.

*Printed by Holbrooks Printers  
Norway Road, Portsmouth*